



# Knowledge Mat: Drawing (Make my Voice Heard)

## How does this link to GROW?

R: develop a confident sense of "voice" and learn to express themselves in a variety of creative ways



## Key Knowledge:

### Guerrilla art



Guerrilla art is similar to graffiti because it is often produced without permission. It usually appears unannounced in unusual places and can have a controversial message.

### Mural



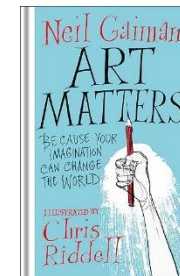
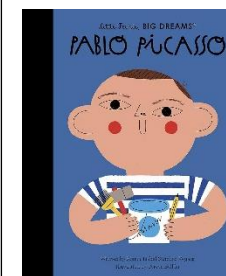
A mural is a large painting that may cover a wall. Artists are usually commissioned to paint them.

### Graffiti



Graffiti is used to describe spray painted words and images that appear on property without permission. It is illegal to graffiti on private and public property.

## Books you might like:



## Subject Specific Vocabulary

<u>aesthetic</u>	As an adjective, it describes something that is pleasing to look at.
<u>commissioned</u>	When someone is asked to create a piece of art.
<u>interpretation</u>	How the meaning of an image is understood.
<u>mural</u>	A painting made directly on a wall or other permanent structure.
<u>symbolic</u>	Conveying a message using symbols.
<u>tone</u>	How light or dark something is.

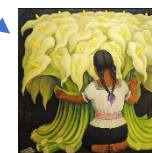
Chiaroscuro: an Italian word meaning light and dark.



A drawing, painting or photograph is described as using chiaroscuro when dramatic light and shade is the main feature of the image. It is used to make something on a flat surface look more three-dimensional.

## Key Artists:

- Dan Fenelon
- Banksy
- Leonardo da Vinci
- Diego Rivera
- Caravaggio
- Pablo Picasso



## What I've learnt previously:

To create different tones and textures through independently selecting tools and techniques to create portraits and collagraph prints. I have studied artists who use drawing and painting to create a variety of colours, tones and textures.

## This will help me to:

Collect a good range of imagery with annotated notes and sketches. Use tools effectively to explore a range of effects and apply chiaroscuro to create light and form through a tonal drawing.